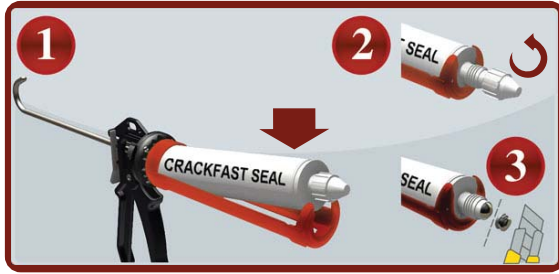


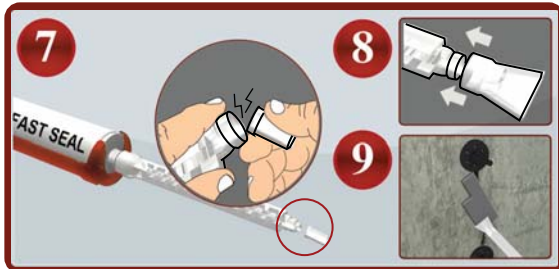
SEAL CRACK



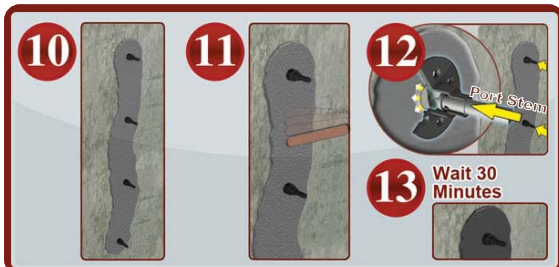
1. Place CRACKFAST™ SEAL cartridge (1) into dispensing tool.
2. Remove screw cap.
3. Cut off cartridge tip just below metal ring.



4. Screw threaded square mixing nozzle (2) onto end of cartridge.
5. Insert ports (8) in holes on side of CRACKFAST™ box. Dispense CRACKFAST™ SEAL around the face of each port. Keep injection hole in the middle of port clear.
6. Center ports (8) along length of crack (Refer to instruction manual for recommended spacing).



7. Snap off nozzle tip. Wear gloves (10) to avoid skin contact with chemical.
8. Push applicator fan (3) onto end of nozzle.
9. Apply CRACKFAST™ SEAL (1) along the full length of crack.

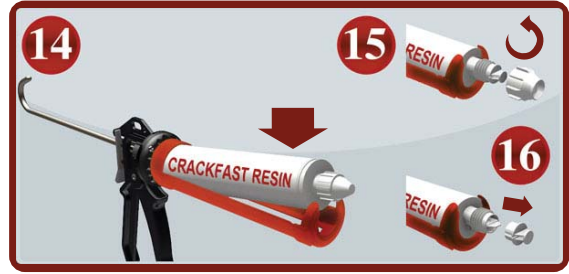


10. Make sure CRACKFAST™ SEAL (1) covers the entire crack as illustrated.
11. Smooth CRACKFAST™ SEAL using wooden spatula (4) as required.
12. Ensure all port stems are pressed in (open).
13. Allow CRACKFAST™ SEAL to fully cure (minimum 30 minutes @ 20° C).

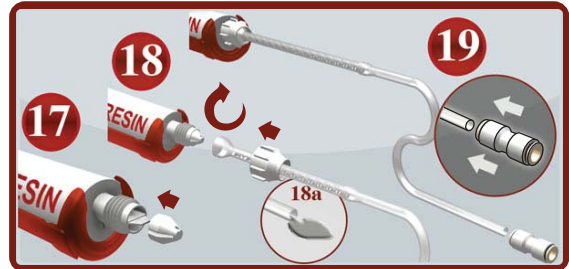


CONTENTS

INJECT RESIN

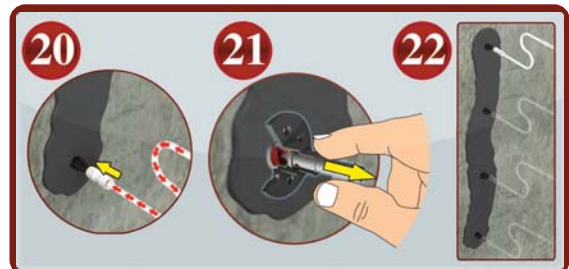


14. Place CRACKFAST™ RESIN cartridge (5) into dispensing tool.
15. Remove plastic nut (do not throw away).
16. Pull out stopper.



17. Insert cartridge outlet plug (6).
18. Pull unthreaded round mixing nozzle (7) through plastic nut and secure nut onto CRACKFAST™ RESIN (5) cartridge.
- 18a. Extrude a small quantity of CRACKFAST™ RESIN to waste to ensure an even homogeneous mixture.
19. Push fit connector (9) onto end of tube (7).

Note: Injection begins at the lowest port.



20. Slide fit connector (9) onto port (8) until connector stops. Inject CRACKFAST™ RESIN until it begins to flow out of the adjacent port. Release fit connector from port by pressing in its' spring loaded insert and pulling fit connector away from port.
21. Close off the first injection port by pulling out port stem.
22. Disconnect the fit connector and press it onto the next port in line. Inject CRACKFAST™ RESIN until it flows from the third port. Continue the procedure until crack is completely filled.



23. Allow CRACKFAST™ RESIN (5) to fully cure (minimum 12 hours @ 20°C) Ensure all injection ports (8) remain closed during curing.
24. Use appropriate tools to cut off ports and smooth over work area, as desired.
25. Make any final repairs to surface of concrete as needed.