

DESCRIPTION

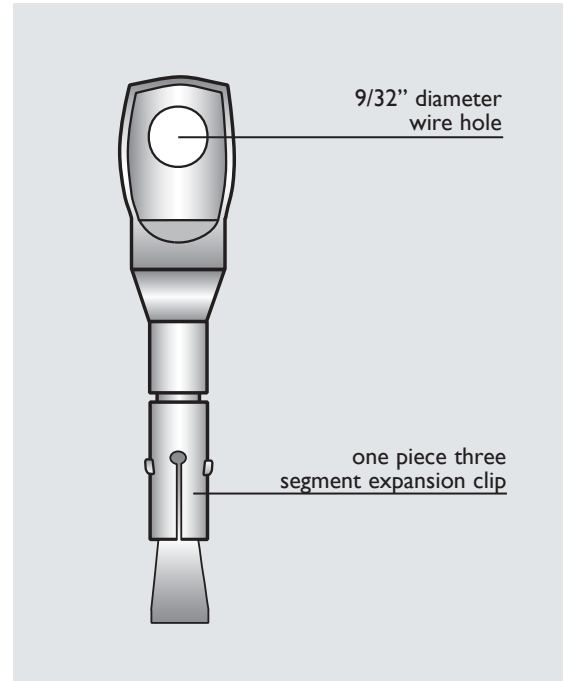
The UCAN Tie Wire Wedge Anchor is a steel fastener, designed primarily for suspended ceiling installation. The anchor consists of a steel body with 9/32" diameter wire hole and a one piece wrap around expansion clip.

FEATURES

- Wrap around expansion clip provides true 360° expansion
- Non-bottom bearing type
- Fast, simple installation by hammer
- Anchor has follow-up expansion feature
- Rigid, one piece fastening
- Zinc Plated

LIMITATIONS

Not recommended for uncured concrete (less than 7 days of curing).



MATERIAL SPECIFICATIONS

Anchor body

- Grade AISI C1022
- Minimum tensile strength - 75,000 psi
- Average yield strength - 60,000 ps

Sleeve

- Cold rolled steel, AISI C1050

Corrosion protection

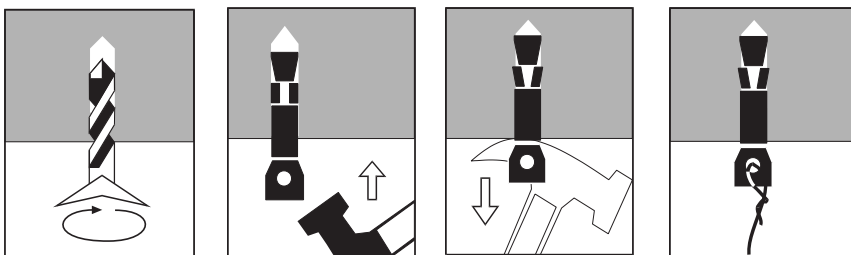
- The anchor body and expansion clip are zinc plated.

TECHNICAL DATA

Drilled Hole Diameter	1/4"
Embedment	1-1/8"
Ultimate Tension Load In 2,500 psi Concrete	1,800 lbs
	8.00 kN
Ultimate Tension Load In 4,000 psi Concrete	2,200 lbs
	9.79 kN

Note: Load data is provided as a guide only.

INSTALLATION



NOTE:
 Apply Safety Factor to ensure the working load per anchor does not exceed 1/4 of the tabulated ultimate load, under static loading conditions.

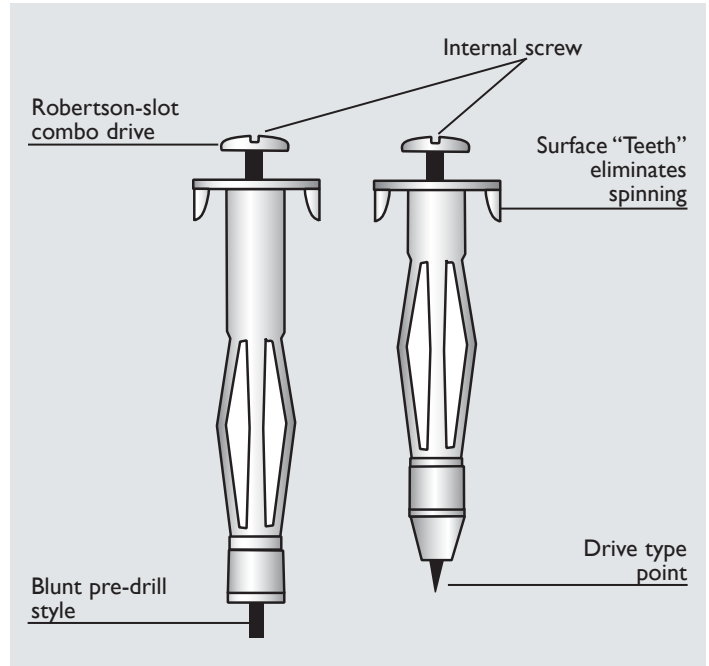
DESCRIPTION

The UCAN Hollow Wall anchor is a light duty screw type expansion anchor designed specifically for fastening to cavity walls, constructed of drywall, plaster or wallboard. It is available in 1/8" to 1/4" screw sizes.

Once installed, the anchor creates a bearing surface with expanded arms guaranteeing a secure and reliable fixture.

This anchor comes complete with a combination head for both Robertson and slot screw drivers. It is also available in 1/8" size as a drive type which does not require a predrilled hole.

The MWA installation tool is available for easy one step expansion of the anchor. This tool eliminates the need to expand the anchor with a screw driver.



FEATURES

- One piece unit for fast installation
- Can be installed with a hollow wall anchor installation tool or a screw driver
- Drive type does not require predrilled hole
- Zinc plated

TYPICAL APPLICATIONS

- Fastening into hollow material
- Light loading applications
- Fastening into panel-boards
- Light shelving

ANCHOR SELECTION

Combination Head Screw Type

Part No.	Size	Board Thickness (Grip Range)	Drill Bit
	inch	inch	inch
MWA 18XS	1/8 XS	0 - 1/2	5/16
MWA 18S	1/8 S	1/8 - 1/2	5/16
MWA 18SL	1/8 SL	1/8 - 3/4	5/16
MWA 18L	1/8 L	5/8 - 7/8	5/16
MWA 316S	3/16 S	1/8 - 5/8	7/16
MWA 316L	3/16 L	5/8 - 1-1/4	7/16
MWA 14S	1/4 S	1/8 - 5/8	1/2
MWA 14L	1/4 L	5/8 - 1-1/4	1/2

Drive Type

Part No.	Size	Board Thickness (Grip Range)
	inch	inch
MWD 18S	1/8 S	1/8 - 1/2
MWD 18SL	1/8 SL	1/8 - 3/4
MWD 18L	1/8 L	1/8 - 3/4

DESCRIPTION

The UCAN Alex Plug is a corrosion resistant aluminum plug designed for use in all masonry base materials. The unique body design provides a firm grip of both the screw and base material. The Alex Plug is available exclusively from UCAN Fastening Products. This anchor comes in lengths ranging from 1" to 1-1/2" and can be cut to any desired length.

FEATURES

- Corrosion resistant plug
- Suitable for light duty fastening in a broad range of base materials
- Can be cut to any size
- Withstands elevated temperatures

TYPICAL APPLICATIONS

- Light duty fastenings
- Cable clips
- Electric light fixtures

LIMITATIONS

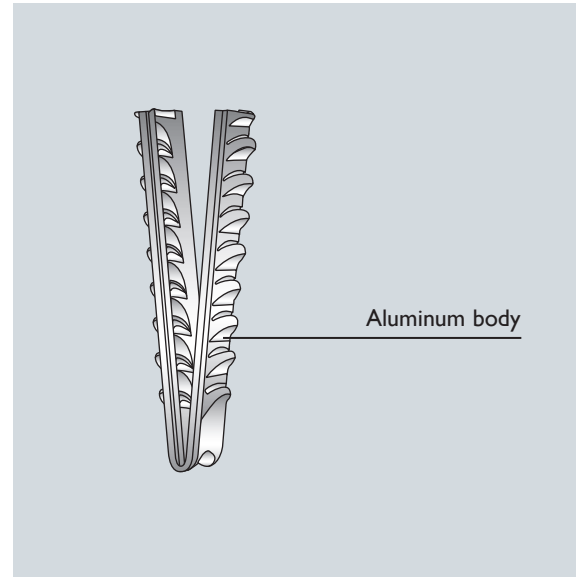
- Not designed for heavy, vibratory or impact loads.

ANCHOR SELECTION

Part No.	Length	Screw size	Drill Bit
	inch		inch
ALE 141	1	6 - 10	1/4
ALE 14114	1-1/4	6 - 10	1/4
ALE 14112	1-1/2	6 - 10	1/4

DESIGN DATA

Part No.	Size	Ultimate Tension Load
ALE 141	1/4 X 1	166 lbs (0.79 KN)
ALE 14114	1/4 X 1-1/4	178 lbs (0.74 KN)
ALE 14112	1/4 X 1-1/2	325 lbs (1.45 KN)



DESCRIPTION

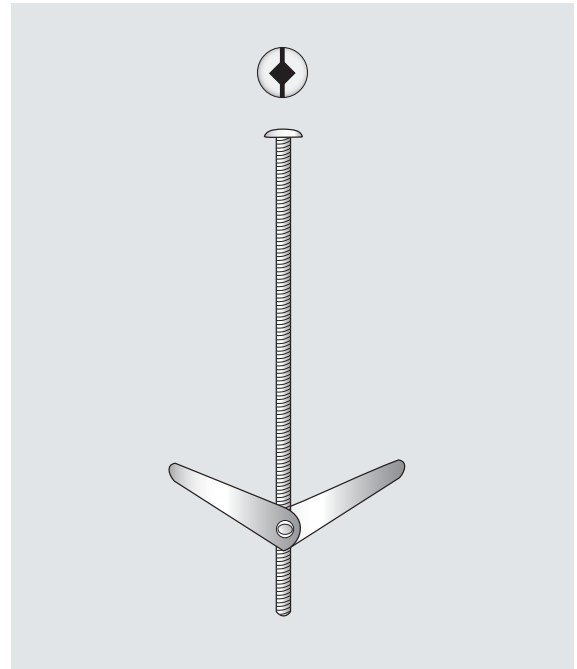
The UCAN Toggle Bolt is an ideal anchor for fastening into any hollow material. This fastener is manufactured from high quality zinc plated steel with wide bearing arms to create excellent load transfer on the back of the base material. The toggle bolt is available in diameters ranging from 1/8" to 3/8" and bolt lengths up to 6". Its truss combination head style is suitable for Robertson or slot drivers. Toggle heads only are also available.

FEATURES

- Heavy duty nut, redesigned wing and spring
- Fully assembled unit
- Suitable for fastening into hollow base materials
- Removable

TYPICAL APPLICATIONS

- Light fixtures
- Wall or ceiling hangings
- Decorative fixtures
- Hand rails
- Toggle heads can be used with threaded rods for metal deck applications



ANCHOR SELECTION

Part No.	Bolt Diameter	Drill Bit Diameter	Bolt Length
	inch	inch	inch
TOG 182	1/8	3/8	2
TOG183	1/8	3/8	3
TOG184	1/8	3/8	4
TOG3162	3/16	1/2	2
TOG3163	3/16	1/2	3
TOG3164	3/16	1/2	4
TOG3165	3/16	1/2	5
TOG3166	3/16	1/2	6
TOG143	1/4	5/8	3
TOG144	1/4	5/8	4
TOG145	1/4	5/8	5
TOG146	1/4	5/8	6
TOG384	3/8	1	4
TOG385	3/8	1	5
TOG386	3/8	1	6

DESIGN DATA

Bolt Size	Ultimate Tension Load Tension	
	Block	Drywall
	lbs	lbs
inch	(kN)	(kN)
1/8	300 (1.33)	120 (0.53)
3/16	470 (2.09)	165 (0.73)
1/4	1,090 (4.87)	175 (0.78)
3/8	1,170 (5.20)	190 (0.85)

Note: Use as guide values only. Actual results may vary depending on base material quality and installation conditions.

DESCRIPTION

The UCAN MJP Insulation fastener is made from an impact resistant low density Polyethylene or Polypropylene copolymer material and is used for fastening insulation board to concrete and masonry.

FEATURES

- Simple installation
- No heat loss or transfer
- Special head design ensures bonding of plaster or stucco finishing coats.

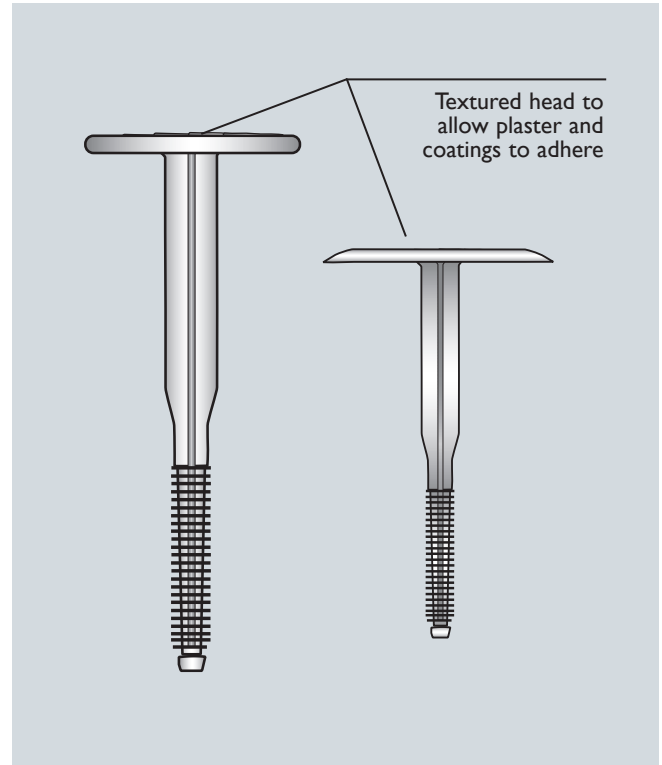
TYPICAL APPLICATIONS

- Various types of insulation materials to concrete or masonry

MATERIAL SPECIFICATION

High density Polypropylene Copolymer, UV resistant
 High density Polyethylene, UV resistant (MJP614 only)

- in place temperature range - 40° C to +80° C
- installation temperature - 0° C to +40° C



ANCHOR SELECTION

Part Number	Anchor Length inch	Head Diameter inch	Fastens up to inch	Drill bit Diameter inch
MJP234	2-3/4	1-1/2	1-1/2	5/16
MJP512	5-1/2	1-1/2	4	5/16
MJP614	6-1/4	1-1/2	5	5/16
MJX3	3-1/4	1-1/2	2	5/16
MJX4	4-1/2	1-1/2	3-1/2	5/16
MJL234	2-3/4	2-3/8	1-1/2	5/16
MJL332	3-3/4	2-3/8	2-1/2	5/16
MJL412	4-1/2	2-3/8	3	5/16
MJL512	5-1/4	2-3/8	4	5/16

MJP INSULATION FASTENER

DESIGN DATA

Ultimate Loads

Base Material	Tension	Shear
	lbs (kN)	lbs (kN)
Solid Concrete	112 (0.5)	200 (0.9)
Concrete Block	101 (0.4)	170 (0.8)

* The quality of concrete block varies.
Loads are provided as guide value only.

NOTE:

Apply Safety Factor to ensure the working load per anchor does not exceed 1/5 of the tabulated ultimate load, under static loading conditions.

SPECIFICATION

The following sample specification clause is arranged for inclusion in any one of a variety of master specification sections utilizing the Construction Specifications Canada (CSC) format. Brackets [...] indicate alternatives, data required, or need for the specifier to fill in information.

ANCHORS (FASTENERS)

Rigid (soft) insulation shall be installed with UCAN [MJP, MJX, MJL] *Insulation Fastener*, supplied by UCAN Fastening Products. The insulation fastener shall be all plastic and shall be installed according to the manufacturer's instructions.

DESCRIPTION

The UCAN Cast-in Place Zamac Insert is designed for pre-planned fastening in concrete. The insert provides rustproof threaded metal holes in precast, pre-stressed or poured-in-place concrete. It is die cast of a zinc alloy (ZAMAC 5), which provides excellent resistance to atmospheric conditions and will not mar or stain finished installations.

FEATURES

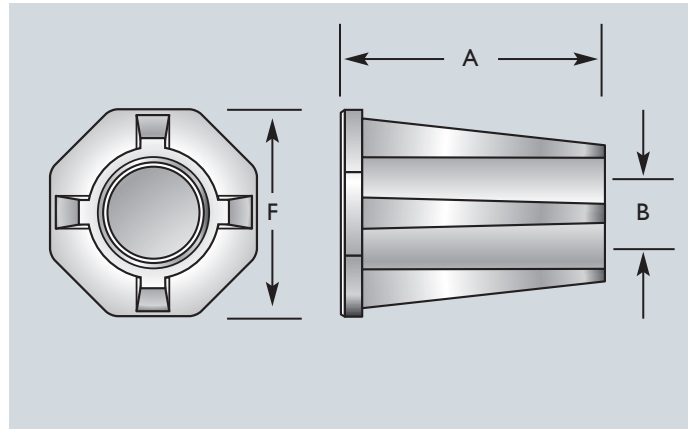
- Fastening is simplified when inserts are cast-in prestressed units, slabs and poured in concrete structures
- Preplanned location of inserts eliminates costly concrete drilling and masonry anchor installation
- 100% Rust Proof.

MATERIAL SPECIFICATION

BODY: ZAMAC 5

TYPICAL APPLICATIONS

- Heavy Machinery
- Railings
- Park Benches
- Utility Poles
- Line Machinery
- Air Ducts
- Traffic Lights
- Theater Chairs
- Conveyor Systems
- Electrical



NOTE:

Apply *Safety Factor* to ensure the working load per anchor does not exceed 1/4 of the tabulated ultimate load, under static loading conditions.

INSTALLATION AND LOAD DATA

Part No.	Size inch	Insert Length (A) inch	Thread Size (B) inch	Base Width (F) inch	Full Thread Engagement inch	Bolt/Rod Dia.	Installation Torque	Ultimate Tension Load (lbf)	
								2,500 psi concrete	5,000 psi concrete
PZI 10	10-24 x 11/16	11/16	10-24	7/16	5/8	10-24	10 inch-lbs	N/A	850
PZI 15	1/4 x 1-1/2	1-1/2	1/4-20	13/16	7/8	1/4	32 inch-lbs	2,250	N/A
PZI 24	3/8 x 1	1	3/8-16	7/8	7/8	3/8	8 ft-lbs	1,850	2,600
PZI 25	3/8 x 1-3/8	1-3/8	3/8-16	7/8	1-1/8	3/8	8 ft-lbs	2,900	4,600
PZI 35	1/2 x 1-1/2	1-1/2	1/2-13	1-1/4	1-1/4	1/2	19 ft lbs	5,068	5,430
PZI 36	1/2 x 2-7/8	2-7/8	1/2-13	1-3/8	2-1/2	1/2	19 ft-lbs	N/A	N/A
PZI 45	5/8 x 1-11/16	1-11/16	5/8-11	1-3/8	1-3/8	5/8	40 ft-lbs	6,672	6,835
PZI 46	5/8 x 2-7/8	2-7/8	5/8-11	1-9/16	2-1/2	5/8	40 ft-lbs	13,375	N/A
PZI 55	3/4 x 1-11/16	1-11/16	3/4-10	1-9/16	1-1/2	3/4	58 ft-lbs	6,910	8,205
PZI 56	3/4 x 3	3	3/4-10	1-3/4	2-1/2	3/4	58 ft-lbs	N/A	16,375

Note: Loads are provided as guide values only.

DESCRIPTION

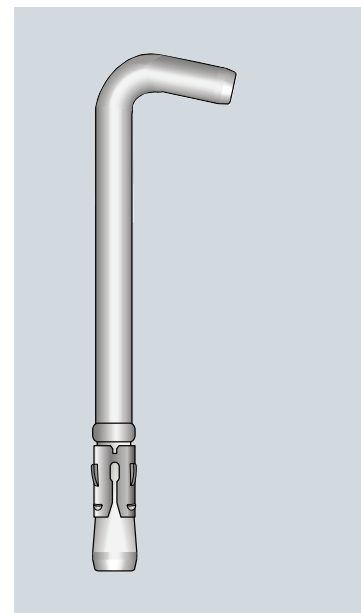
The UCAN Hook Wedge Anchor is a high grade steel fastener, designed primarily for wire mesh installation. The anchor consists of a steel body with 1" hooked end and a one piece three segment wrap around expansion clip.

FEATURES

- Wrap around expansion clip provides true 360° expansion
- Non-bottom bearing type
- Fast, simple installation by hammer
- Anchor has follow-up expansion feature
- Rigid, one piece fastening
- Zinc Plated

LIMITATIONS

Not recommended for uncured concrete (less than 7 days of curing).



MATERIAL SPECIFICATIONS

Anchor body

- Grade AISI C1035
 - Minimum tensile strength - 84,000 psi
 - Average yield strength - 56,000 psi

Clip

- Cold rolled steel, AISI C1010 - C118

Corrosion protection

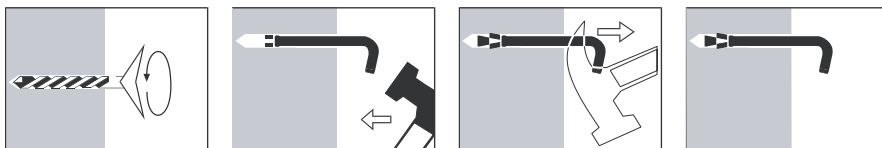
- The anchor body and expansion clip are zinc plated.

TECHNICAL DATA

Drilled Hole Diameter	3/8"
Embedment	3-1/2"
Ultimate Tension Load In 5,000 psi Concrete	1,950 lbs
	8.70 kN
Ultimate Shear Load In 2,000 psi Concrete	2,580 lbs
	11.50 kN

Note: Load data is provided as a guide only.

INSTALLATION



NOTE:
 Apply Safety Factor to ensure the working load per anchor does not exceed 1/4 of the tabulated ultimate load, under static loading conditions.

